



**Curved Doors\*\***  
(supplied with matching edge only)



**Chunky Rail\***



**Chunky Rail\***



**Matching End Panels and Plinths**



**Hinged Steel Corner Post**



**Aluminium Plinth**



**Aluminium Frame Glazed Doors with Obscure Glass**

\* not available in Ultragloss Copperleaf, Limestone, Metallic Blue, Metallic Champagne, Ultramatt Metallic Basalt and Metallic Cashmere.

\*\* not available in Ultragloss Copperleaf, Limestone, Ultramatt Metallic Basalt and Metallic Cashmere.



## Glazed Door Options



**Glazed Doors.** Available in all styles  
(shown in verona style)



**Georgian Glazed Doors\*** Available in all styles  
(shown in palermo style)



**Glazed Drawers\***



**Glazed Letterbox Doors**



**Glazed Letterbox Doors**



**Glazed Porthole Doors**



**Aluminium Frame Glazed Doors**  
with Obscure Glass



**Glazed Wave Hole Doors**



**Glazed Square Hole Doors**



**Horizontal Glazed Curved Doors**

**Glazing Options:** Standard glazing options include clear, frosted or stippled acrylic safety glass. If you have any alternative requests please speak to your dealer.  
Note: Aluminium glazed doors are supplied with frosted glass.

\* not available in High Gloss Colours



## Curved Door Options

Curved doors have a silver back and are supplied with a plain design on all door styles except shaker which is matching.



Plain Curved Doors



Plain Curved Doors (shown on wall cabinet)



Shaker Design Curved Doors\*



Horizontal Curved Door and Horizontal Glazed Curved Door

\* not available in High Gloss Colours



## Carved & Wave Door Options



Sahara Carved Doors (shown in horizontal style)



Sahara Carved Doors (shown in vertical style)



Sahara Carved Drawers



Wave Design 4 Drawer Unit



Wave Design 2 Drawer Unit

## Cornice & Pelmet Options



Tangent Cornice\*\*



Tangent Light Pelmet\*\*



Bullnose Cornice/Pelmet\*\*



Bullnose Cornice/Pelmet\*\*



Dental Rail

\*\* not available in High Gloss Snow Larch



## Curved, Chunky & Standard Feature Options



Stepped Curved Feature\*\*



Curved Corner Feature  
& Tangent Cornice\*\*



Stepped Curved Feature\*\*



Curved Feature End Panel\*\*



Chunky Surround Feature



Chunky End Panel



T&G End Panel\*



Plain End Panel



Pillar End Panel

\* not available in High Gloss Colours

\*\* not available in High Gloss Snow Larch



## Mantle and Canopy Options



**Mantle shown with narrow shelf option\*\***  
(available in any width to suit your cooker)



**Mantle shown with broad shelf option\*\***  
(available in any width to suit your cooker)



**Modern Canopy**  
(front panel supplied to suit door style)



**T&G Canopy\***



**Plain Canopy**

\* not available in High Gloss Colours  
\*\* not available in High Gloss Snow Larch



## Pilaster Options



Reeded Pilaster



Gun Barrel Pilaster\*



Fluted Pilaster



Column Pilaster\* (shown with panels)

## Pelmet Options



Scalloped Pelmet



Arched Pelmet

Can be used in a cabinet or as a window pelmet (available in any length)



Stepped Pelmet.

Can be used in a cabinet or as a window pelmet (available in any length)



Frieze Pattern Pelmet\*

Can be used in a cabinet or as a window pelmet (available in any length)

\* not available in High Gloss Colours



## Wine Rack Options



Unit with Wine Rack Shelves



**Plain Wine Rack\***  
(4, 8 & 16 bottle available)



**Frieze Pattern Wine Rack\***  
(4, 8 & 16 bottle available)



**Frieze Pattern Wine Rack\***  
(4, 8 & 16 bottle available)



**Round Wine Rack**  
(5, 10 & 15 bottle available)

## General Accessory Options



**Plate Rack Unit with T&G Panels\* & Corner Brackets\***

\* not available in High Gloss Colours



**Display Cabinet Surround**



**Scroll End Panels with Shelf**  
(Available plain or T&G\*)



## General Accessory Options



Aluminium Plinth



Matching Plinth



Wall End Shelf Unit



Base End Shelf Unit



Pediment\*



Mock Spice Drawer



Notice Board\*\*



Matching Shelves with Brushed Steel  
Brackets (available in any size to suit)



Sahara Carved Panels (used to create shelving feature)

\* not available in High Gloss Colours

\*\* not available in High Gloss Snow Larch





**Tangent Cornice**  
Available in Camden, Ludlow & Wilton



**Bullnose Cornice/Pelmet**  
Available in Camden, Ludlow & Wilton



**Chunky Surround Feature**  
Available in all ranges



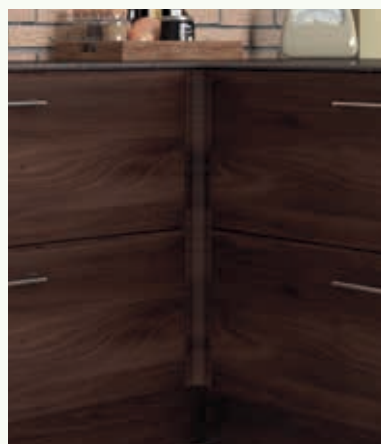
**T&G End Panel & Curved Corner Feature**  
Available in Ludlow Cream & Wilton  
*excluding Woodgrain White/Paintable*



**Curved Corner Feature & Tangent Cornice**  
Available in Wilton  
*excluding Woodgrain White/Paintable*



**Trim Rail shown with Cornice**  
Available in Ludlow Cream & Wilton



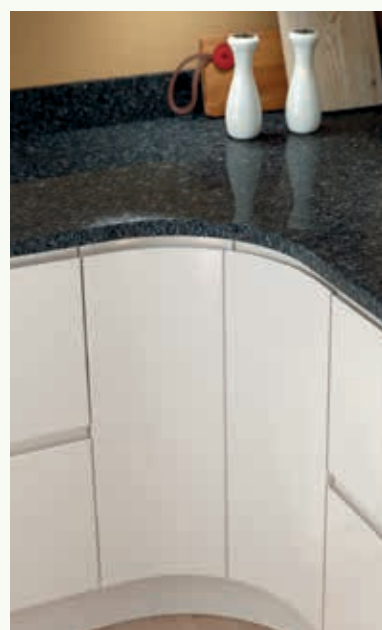
**Internal Corner Post**  
Available in Lacarre & Malton



**External Corner Post**  
Available in Lacarre & Malton



**Curved Door**  
Available in all ranges



**Internal Curved Doors**  
Available in Lacarre



**Curved Chunky Surround Feature**  
Available in all ranges  
*excluding Wilton Woodgrain White/Paintable*



**Glazed Doors**  
Available in Camden, Ludlow & Wilton



**Aluminium Frame Glazed Doors with Obscure Glass** Available in all ranges





**Plain End Panel**  
Available in all ranges



**T&G End Panel**  
Available in Ludlow Cream & Wilton  
excluding Woodgrain White/Paintable



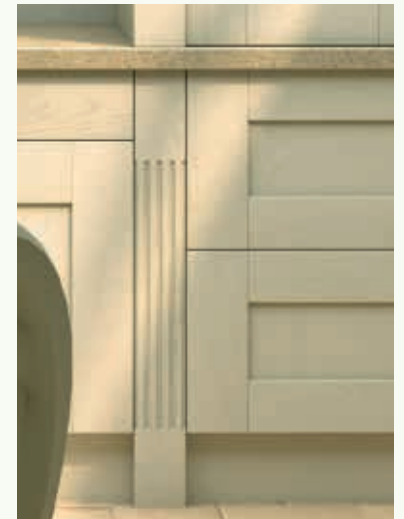
**Plain/T&G Scroll End Panel** (Plain shown)  
Available in Ludlow Cream & Wilton *excluding Woodgrain White/Paintable*



**Mantle**  
Available in Ludlow Cream & Wilton *excluding Woodgrain White/Paintable*



**Gun Barrel Pilaster**  
Available in Wilton  
*excluding Woodgrain White/Paintable*



**Fluted Pilaster**  
Available in Ludlow Cream & Wilton  
*excluding Woodgrain White/Paintable*



**Wine Rack Rail**  
Available in Wilton  
*excluding Woodgrain White/Paintable*



**Display Cabinet Surround  
with Curved Corner Feature**  
Available in Camden, Ludlow & Wilton



**Corner Bracket**  
Available in Wilton  
*excluding Woodgrain White/Paintable*



**Corbel**  
Available in Ludlow Cream & Wilton  
*excluding Woodgrain White/Paintable*









**Inset Handles**  
Available within Zurfiz and Bella ranges.  
See page 21, 24 & 45  
Satin Chrome



**Inset Curved Handles**, fitted



**Cylinder Handles**  
Stainless Steel



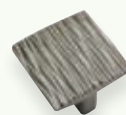
**Dimple Handle**  
Satin Chrome



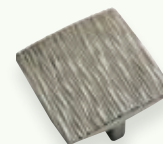
**Dimple Knob**  
Satin Chrome



**Chunky Bow Handles**  
Stainless Steel



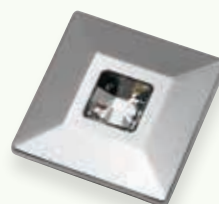
**50 Riven Handle**  
Stainless Steel



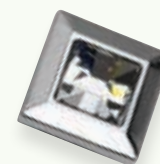
**80 Riven Handle**  
Stainless Steel



**Crystal Knob**  
Chrome



**Swarovski 80 Handle**  
Chrome



**Swarovski 45 Handle**  
Chrome



**Swarovski Bar Handle**  
Chrome





**Slim Bar Handle**  
Stainless Steel



**Flat Bar Handle**  
Satin Chrome



**Bow Handle**  
Satin Chrome



**Wave Handle**  
Satin Chrome



**Barrel Handle**  
Stainless Steel



**Stepped Taper Handle**  
Stainless Steel



**Flat Bow Handle**  
Satin Chrome



**Strap Handle**  
Satin Chrome



**Tapered Bow Handle**  
Satin Chrome



**Round Knob**  
Satin Chrome



**Oval End D Handle**  
Satin Chrome



**D Handle**  
Satin Nickel



**Shell Handle**  
Satin Nickel



**Stepped Knob**  
Satin Chrome



**Handle-Less Rail in Satin Chrome Finish.** This sleek minimal look integrates the rail system into the cabinets. See pages 13, 14, 23 & 39



**53 Wood Knob**



**Push Plate**  
Stainless Steel



**Satin Chrome/Chrome Bar Handle**



**Notched D Handle**  
Satin Chrome



**Barn D Handle**  
Cast Iron



**Dovetail Handle**  
Pewter





**Winchester Knob**  
Cream/Antique Brass



**Winchester T Handle**  
Cream/Antique Brass



**Winchester Drawer Pull**  
Cream/Antique Brass



**Valentino Latch Handle**  
Pewter



**Valentino D Handle**  
Pewter



**Forge Knob**  
Pewter



**Forge D Handle**  
Pewter



**Mottled Knob**  
Antique Brass



**Mottled D Handle**  
Antique Brass



**Mottled Knob**  
Pewter



**Mottled D Handle**  
Pewter



**Anaconda Knob**  
Cast Iron



**155 Anaconda D Handle**  
Cast Iron



**250 Anaconda D Handle**  
Cast Iron



**Hammered Knob**  
Antique Brass



**Hammered Bow Handle**  
Antique Brass



**Cage Drawer Pull**  
Pewter



**Cage Handle**  
Pewter



**Pewter Knob & Back Plate**  
Pewter



**Canterbury D Handle**  
Pewter



**Cromwell D Handle**  
Pewter



**Creuset D Handle**  
Black



**Creuset Shell Handle**  
Black



**Bordeaux Knob**  
Cast Iron



**Bordeaux T Handle**  
Cast Iron



**Bordeaux D Handle**  
Cast Iron



A range of high quality storage solutions

- *Smart Design*
- *Soft Close*
- *Strong and Robust*
- *Wipe clean anti-slip trays*



**150 Two Tier Base Pull Out**  
Fits a 150mm wide unit



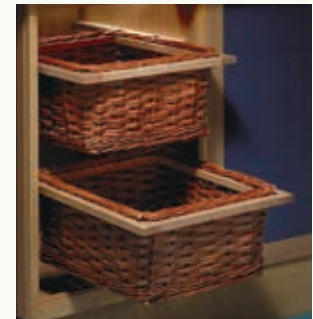
**300 Two Tier Base Pull Out**  
Available in left and right hand option.  
Fits a 300mm wide unit



**Wire Drawer Organisers**  
Available for 500mm & 600mm wide units (Not soft close)



**Internal Wire Drawers**  
Available for 500mm & 600mm wide units (Not soft close)



**Rattan Storage Baskets**  
Complete with runners. Ideal for fruit and veg storage. Available for 400mm, 500mm, 600mm wide units



**6 Tier Full Height Larder Pull Out** (6 adjustable shelves)  
Available for 300mm & 500mm wide unit



**Ultimate Internal Wire Drawers**  
Available for 500mm & 600mm wide units



**Blind Corner Optimiser**  
Available in left and right hand option.  
(RH shown) A practical solution to maximise storage space in a corner unit. Fits a 900mm & 1000mm wide blind corner base unit



**3/4 Carousel**  
Full 360° rotation, 2 adjustable trays.  
Fits a standard 900 x 900mm 'L' shaped corner base unit



**Ultimate 360° Carousel**  
Provides optimum corner storage and accessibility with full 360° rotation.  
2 full extension centre trays, 6 adjustable side trays.  
Fits a standard 900 x 900mm 'L' shaped corner base unit



**Pull Out Bin (68ltr) 2 x 34ltr**  
Fits a 500mm wide unit



**Pull Out Bin (68ltr) 1 x 34ltr, 2 x 17ltr**  
Fits a 500mm wide unit